

MAYRUN



WINTER TIRE

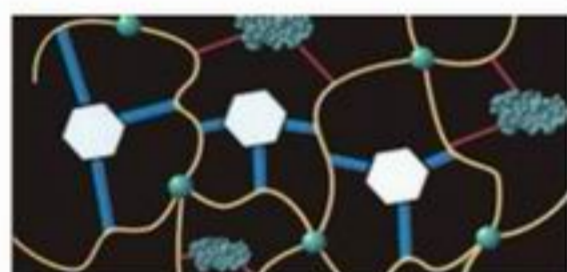
Let's Go Further

MR 800

The superb wet and dry handling is competitive with some of the best UHP summer tires available, but the asymmetric pattern MR800 also has twice the winter performance of the typical summer UHP tire. The best technological advances in profile design, construction, tread pattern and tread silica compound have been applied together in one state of the art tire. The result is a sophisticated tire that provides excellent handling in all weather conditions, along with an advanced, cutting-edge appearance.



Silica compound



MAYRUN Tire's latest Silica compound technology tread compound yields excellent wet and dry.

Ride & Noise



Improved stopping distance, superior acceleration performance and reduced pattern noise are provided by the firm central rib and long central interlock button.

Wet & Dry Handling



Side slot continuously connected to the wide, circumferential grooves enhance the water drainage at the center of the contact patch and strengthen the controlling power even in wet conditions.

Hydroplaning

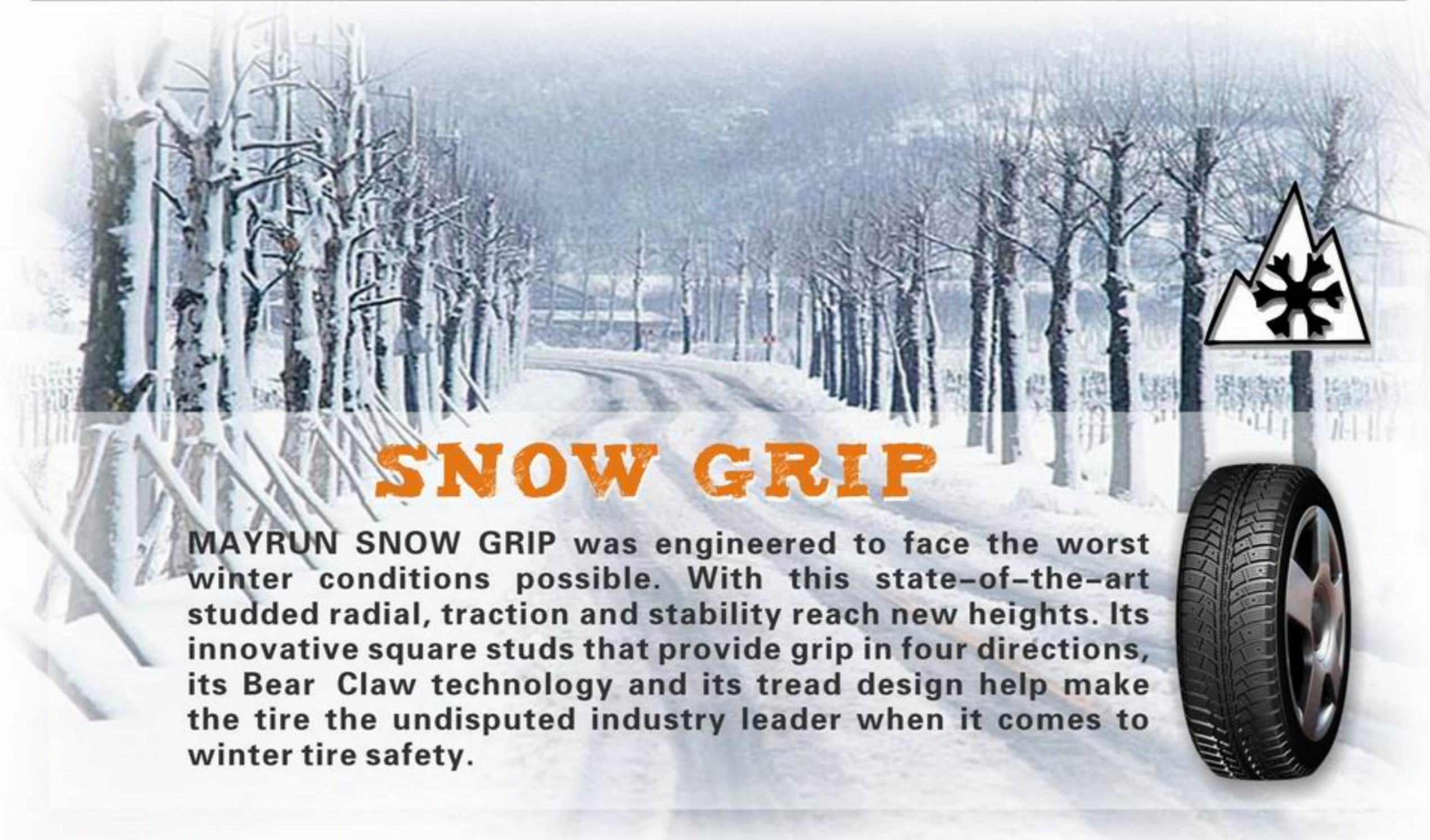


The optimal design with enlarged main grooves facilitates water drainage to minimize hydroplaning.

SIZES	SPEED SYMBOL	LOAD INDEX		STD RIM INCH	TREAD DEPTH		OVERALL DIAMETER MM	SECTION WIDTH		SECTION LOAD		INFL. PRESS (KPA)	
		STD.	XL(RF)		MM	32NDS		MM	MM	LBS	KGS	MAX.	STD.
65 Series													
175/65R14	H	82	--	5.0	8.0	10	584	177	1047	475	300	250	
185/65R14	H	86	--	5.5	8.0	10	596	189	1168	530	300	250	
185/65R15	H	88	--	5.5	8.0	10	621	189	1235	560	300	250	
195/65R15	V	91	--	6.0	8.0	10	635	201	1356	615	300	250	
205/65R15	V	94	--	6.0	8.0	10	647	209	1477	670	300	250	
60 Series													
185/60R14	H	82	--	5.5	8.0	10	578	189	1047	475	300	250	
195/60R15	V	88	--	6.0	8.0	10	615	201	1235	530	300	250	
215/60R16	V	95	--	6.5	8.0	10	664	221	1521	690	300	250	
55 Series													
195/55R15	V	85	--	6.0	8.0	10	595	201	1135	515	300	250	
205/55R16	V	--	94	6.5	8.0	10	632	214	1356	615	340	290	
215/55R16	V	--	97	7.0	8.0	10	642	226	1609	730	340	290	
225/55R16	V	--	99	7.0	8.0	10	654	233	1709	735	340	290	
50 Series													
195/50R15	V	82	--	6.0	8.0	10	577	201	1047	475	300	250	
205/50ZR16	W	87	--	6.5	8.0	10	612	214	1201	545	300	250	
225/50ZR16	W	92	--	7.0	8.0	10	632	233	1389	630	300	250	
45 Series													
205/45ZR16	W	83	--	7.0	8.0	10	690	206	1074	487	300	250	
215/45ZR17	W	--	91	7.0	8.0	10	626	213	1356	615	340	290	
225/45ZR17	W	--	94	7.5	8.0	10	634	225	1477	670	340	290	
235/45ZR17	W	--	97	8.0	8.0	10	644	236	1609	730	340	290	
40 Series													
205/40ZR17	W	--	84	7.5	8.0	10	596	212	992	405	340	290	
215/40ZR17	W	--	87	7.5	8.0	10	604	218	1201	545	340	290	
225/40ZR18	W	--	92	8.0	8.0	10	637	230	1389	630	340	290	
235/40ZR18	W	--	95	8.5	8.0	10	645	241	1521	690	340	290	
35 Series													
215/35ZR18	W	--	84	7.5	8.0	10	607	218	1102	500	340	290	
235/35ZR19	W	--	92	8.5	8.0	10	647	241	1356	615	340	290	
245/35ZR19	W	--	93	8.5	8.0	10	655	248	1433	650	340	290	
225/35ZR20	W	--	93	8.0	8.0	10	666	230	1322	600	340	290	
245/35ZR20	W	--	95	8.5	8.0	10	680	248	1521	690	340	290	
255/35ZR20	W	--	97	9.0	8.0	10	686	260	1609	730	340	290	

Feature	Safety Benefits
Tread Design	Improves driving stability and stud operation. The new tread also provides a quieter drive.
Tread Compound	This environmentally friendly compound increases the rubbers tear resistance while increasing grip in winter conditions.
Driving Safety Indicator	The driving safety indicator on the center rib of the tire indicates groove depth. The numbers fade one at the time as the tire wears down.
Information Field	The information field on the tire sidewall can be used to mark the correct inflation pressure and the tires rotation on the vehicle.
Directional Tread Pattern	Expels water, snow and slush while providing exceptional lateral grip.
Jointless Nylon Belt	Helps prevent tread separations while providing smooth, comfortable ride

SIZES	SPEED LOAD	RIM APPROVED	RIM MEASURED	OVERALL DIAMETER	OVERALL WIDTH	TREAD DEPTH (32ND)	STUD SIZE TSMI	STUD SIZE EURO
70 series								
175/70R13	82T	4.5-6	5	22.7	7.0	12	11	8-10
65 series								
175/65R14	82T	5-6	5	23.0	7.0	12	11	8-10
175/65R14	86TXL	5-6	5	23.0	7.0	12	11	8-10
185/65R14	86T	5-6.5	5.5	23.5	7.4	12	11	8-10
185/65R14	90TXL	5-6.5	5.5	23.5	7.4	12	11	8-10
185/65R15	88T	5-6.5	5.5	24.4	7.4	12	11	8-10
185/65R15	92TXL	5-6.5	5.5	24.4	7.4	12	11	8-10
195/65R15	91T	5.5-7	6	25.0	7.9	12	11	8-10
195/65R15	95TXL	5.5-7	6	25.0	7.9	12	11	8-10
55 series								
205/55R16	91T	5.5-7.5	6.5	24.9	8.4	12	11	8-10
205/55R16	94TXL	5.5-7.5	6.5	24.9	8.4	12	11	8-10
45 series								
225/45R17	94TXL	7-8.5	7.5	25	8.8	12	11	8-10



SNOW GRIP

MAYRUN SNOW GRIP was engineered to face the worst winter conditions possible. With this state-of-the-art studded radial, traction and stability reach new heights. Its innovative square studs that provide grip in four directions, its Bear Claw technology and its tread design help make the tire the undisputed industry leader when it comes to winter tire safety.



SIZES	PR	TYPE	SPEED SYMBOL	LOAD INDEX		STD RIM INCH	TREAD DEPTH		OVERALL DIAMETER MM	SECTION WIDTH MM	TYRE MAX. LOAD		INFL.PRESS	
				S.	T.		MM	32NDS			KG	LBS	BAR	PSI
70 Series														
195/70R15C	8	T/L	R/T	104	102	6.0	10.5	13.2	655	201	S 900 1984 D 850 1874	4.50	65	
205/70R15C	8	T/L	R/T	106	104	6.0	10.5	13.2	669	209	S 900 1984 D 850 1874	4.50	65	
215/70R15C	8	T/L	R/T	109	107	6.5	10.5	13.2	683	221	S 1030 2271 D 975 2150	4.50	65	
225/70R15C	8	T/L	R/T	112	110	6.5	10.5	13.2	697	228	S 1120 2469 D 1060 2337	4.50	65	
65 Series														
195/65R16C	8	T/L	R/T	104	102	6.0	10.5	13.2	660	201	S 900 1984 D 850 1874	4.75	69	
205/65R15C	8	T/L	R/T	102	100	6.0	10.5	13.2	647	209	S 900 1874 D 850 1764	3.75	54	
215/65R16C	8	T/L	R/T	109	107	6.5	10.5	13.2	686	221	S 1030 2271 D 975 2150	4.75	69	
225/65R16C	8	T/L	R/T	112	110	6.5	10.5	13.2	698	228	S 1120 2469 D 1060 2337	4.75	69	
235/65R16C	8	T/L	R/T	115	113	7.0	10.5	13.2	712	240	S 1215 2679 D 1150 2535	4.75	69	

New design for light truck tire

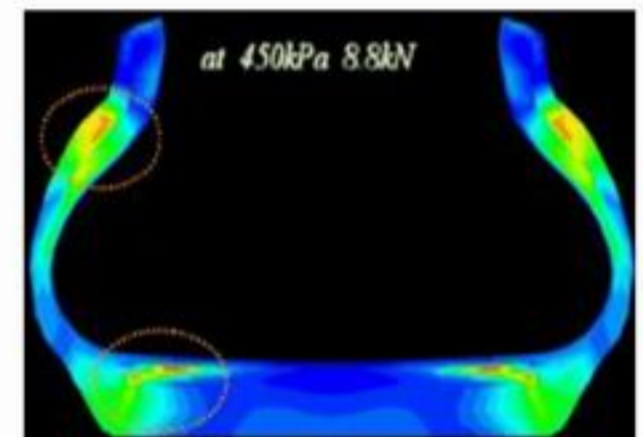
- ◆ New profile design(design by computer simulation& flattened tread shoulder)
- ◆ Unique tread pattern
 1. More excellent performance of water drainage, ground grip and brake force in wet condition with design of three wide grooves length way in the direction of tire rolling.
 2. Large pattern for tread and transverse tread shoulder design enhance the controlling stability and total mileage.
- ◆ Novel protection design of sidewall avoid scrape and stab.



PROFILE: PERFORMANCE FOR DURABILITY, STIMULATED BY COMPUTER

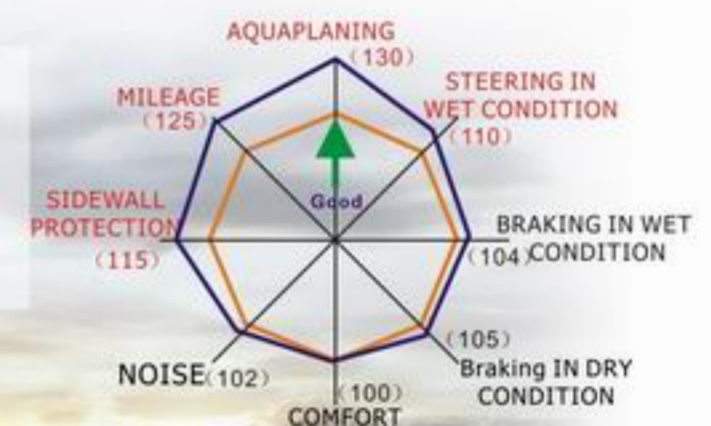
Outer profile of tire designed by computer simulating technology reduces the energy that coming from the powerful strain at the ending point of steel belt and chafer ending.

RESULT: MINIMIZING THE POSSIBILITY of steel belt separation and chafer ending crack.



OUTER PROFILE & RUBBER compound : LONG MILEAGE

- Good tread profile and shoulder profile, wide tire tread.
- More deeper pattern depth and designed by rubber compound with high performance



Feature	Safety Benefits
Shark Tooth Side Activators for Braking Stability	Creates 1000's of wedges to improve handling and stability in rain, snow, ice and high speed driving.
Arrowhead Tread Pattern (Unidirectional)	Expels water, snow and slush while providing uncompromised lateral grip.
Canola Oil Rubber Compound Formula	Only environmentally friendly rubber compound continues to maintain winter properties in cold while providing excellent grip in wet weather.
Driving Safety Indicator	Provides visual awareness of tire wear in millimeters
Jointless Nylon Belt	Helps prevent tread separations while providing smooth and comfortable ride

SIZES	SPEED LOAD	RIM APPROVED	RIM MEASURED	OVERALL DIAMETER	OVERALL WIDTH	TREAD DEPTH (32ND)
70 series						
175/70R13	82T	4.5-6	5	22.7	7.0	12
65 series						
175/65R14	82H	5-6	5	23.0	7.0	12
175/65R14	86TXL	5-6	5	23.0	7.0	12
185/65R14	86H	5-6.5	5.5	23.5	7.4	12
185/65R14	90TXL	5-6.5	5.5	23.5	7.4	12
185/65R15	88H	5-6.5	5.5	24.4	7.4	12
185/65R15	92TXL	5-6.5	5.5	24.4	7.4	12
195/65R15	91H	5.5-7	6	25.0	7.9	12
195/65R15	95TXL	5.5-7	6	25.0	7.9	12
55 series						
205/55R16	91H	5.5-7.5	6.5	24.9	8.4	12
205/55R16	94TXL	5.5-7.5	6.5	24.9	8.4	12
45 series						
225/45R17	94HXL	7-8.5	7.5	25	8.8	12
225/45R17	94VXL	7-8.5	7.5	25	8.8	12



WINTER MASTER

MAYRUN WINTER MASTER was engineered to face the worst winter conditions possible. With this state of the art studless radial, traction and stability reach new heights. Its innovative square studs that provide grip in four directions, its Shark Tooth technology and its tread design help make the tire the undisputed industry leader when it comes to winter tire safety.



KINFOREST TYRE CO. , LTD
WWW. KINFORESTTYRE. COM