



Let's Go Further.

KINFOREST TYRES

KINFOREST



SNOW GRIP

Let's Go Further

Dimension	Li/Si	Dimension	Li/Si
175/70R13	82T	185/65R15	92T XL
175/65R14	82T	195/65R15	91T
175/65R14	86T XL	195/65R15	95T XL
185/65R14	86T	205/55R16	91T
185/65R14	90T XL	205/55R16	94T XL
185/65R15	88T	225/45R17	94T XL

MAYRUN



WINTER MASTER

Let's Go Further

Dimension	Li/Si	Dimension	Li/Si
175/70R13	82T	195/65R15	91H
175/65R14	82H	195/65R15	95T XL
175/65R14	86T XL	205/55R16	91H
185/65R14	86H	205/55R16	94T XL
185/65R14	90T XL	225/45R17	94H XL
185/65R15	88H	225/45R17	94V XL
185/65R15	92T XL		



SNOW GRIP

Silica Compound Studdable Tyre

-30°C workable

Snow, slush and water flow efficiently off the **Polished Grooves** under the tyre.

Bear Claw pattern converge from the sidewall to the central portion, where two irregular consecutive ribs exist. The bear claw pattern provide steering stability and superb handling, especially in the ice condition.



The **M+S** indicates the tire has all season capabilities.



indicates a severe snow conditions rating. It shows that the tyres are the safest tyres for any kind of winter driving.



WINTER MASTER

Silica Compound Studless Tyre

Tread Design

Shark Tooth side improves handling and stability in rain, snow, ice and high speed driving.

Arrowhead Tread Pattern

Expels water, snow and slush while providing exceptional Uncompromised lateral grip.

Driving Safety Indicator

The driving safety indicator on the centre rib of the tire indicates groove depth. The numbers fade one at the time as the tire wears down.



Canola Oil Rubber

Compound Formula

Only environmentally friendly rubber compound continues to maintain winter properties in cold while providing excellent grip in wet weather.

Information Field

The information field on the tire sidewall can be used to mark the correct inflation pressure and the tires rotation on the vehicle.

Jointless Nylon Belt

Helps prevent tread separations while providing smooth and comfortable ride.



R & D

Persistence is the key to success.

R&D team of Kinforest Tyre Co., Ltd (KTCL) has been engaging in research, design and technology support with ten years' experience. KTCL's tyre was engineered to face the worst winter conditions possible.



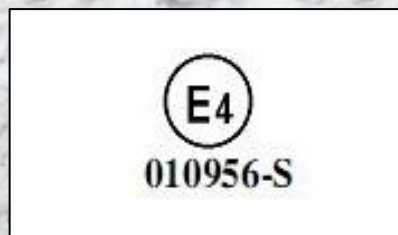
Uniformity Test Machine



Balance Test Machine

Each tyre has been sent to the examination of Uniformity Test & Balance Test before shipment. It provides KTCL's tyre a qualified one with high performance.

KTCL's tyre owns completed series of certificates, which support a convenient launching to worldwide market.



A close-up, high-angle photograph of a tire tread pattern, showing the grooves and sipes in detail. The image is in black and white, with strong highlights and shadows that emphasize the texture of the rubber.

Let's Go Further

Kinforest Tyre Co., Ltd

Professional Tyre manufacturer

1604 Tower West 144, Huangpu Road,
Tianhe, 510655 Guangzhou City,
China

Tel: +86-20-8568 3077

Fax: +86-20-8562 3355

www.kinforesttyre.com